



275 South Road, Walkley, Sheffield, S6 3TA



# 275 South Road Walkley

Offers Around

## £190,000

Nestled on South Road in the vibrant city of Sheffield, this delightful mid-terrace house offers a wonderful opportunity for both families and investors alike. With three spacious bedrooms, this property is perfect for those seeking a comfortable and inviting home. The layout includes two reception rooms, providing ample space for relaxation and entertaining guests.

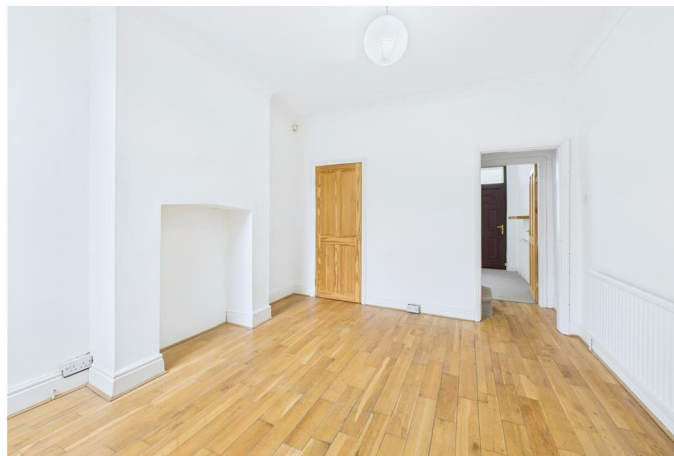
The house has a simple yet appealing design, making it an ideal choice for anyone looking to personalise their living space. This property boasts generous proportions, ensuring that you have plenty of room to create your perfect environment.

The bathroom is well-appointed, catering to the needs of modern living. The location is also a significant advantage, with easy access to local amenities, schools, and transport links, making it convenient for daily life.

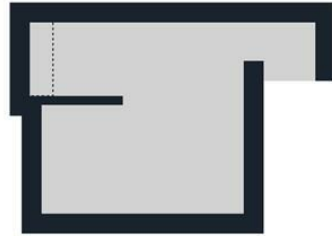
This property presents a fantastic opportunity to acquire a charming home in a sought-after area of Sheffield. Whether you are looking to settle down or invest, this mid-terrace house is sure to impress. Don't miss the chance to make it your own.



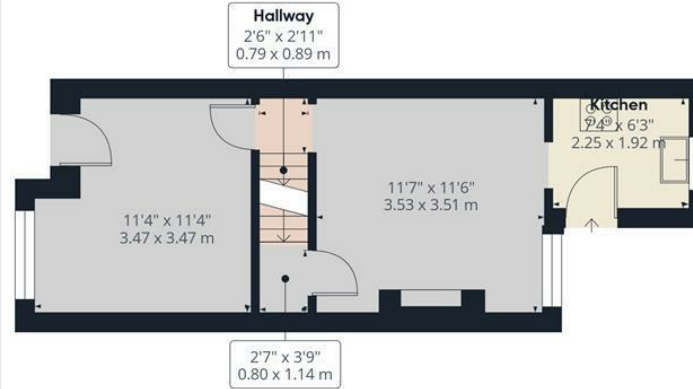
- 3 cosy bedrooms
- 1 modern bathroom
- 2 spacious reception rooms
- Mid-terrace house
- Located on South Road
- Close to Sheffield amenities
- Ideal for families
- Charming interior design
- Viewing recommended
- Great transport links



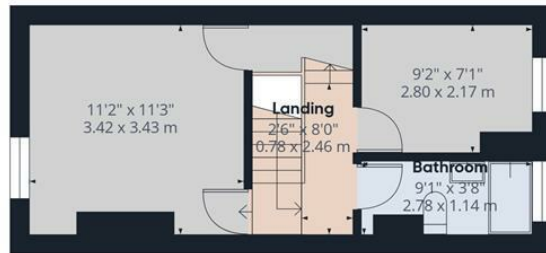




Floor -1



Ground Floor



Floor 1



Floor 2

**Approximate total area<sup>(1)</sup>**  
 693 ft<sup>2</sup>  
 64.3 m<sup>2</sup>

**Reduced headroom**  
 2 ft<sup>2</sup>  
 0.2 m<sup>2</sup>

(1) Excluding balconies and terraces.

Reduced headroom  
 ..... Below 5 ft/1.5 m

Calculations reference the RICS IPMS 3C standard. Measurements are approximate and not to scale. This floor plan is intended for illustration only.

GIRAFFE360

While we endeavour to make our sales particulars fair, accurate and reliable, they are only a general guide to the property and, accordingly, if there is any point, which is of particular importance to you, please contact the relevant office. The Agents have not tested any apparatus, equipment, fittings or services and so cannot verify they are in working order. The buyer is advised to obtain verification. Please note all the measurement details are approximate and should not be relied upon as exact. All plans, floor plans and maps are for guidance purposes only and are not to scale. Under no circumstances should they be relied upon as exact or for use in planning carpets and other such fixtures, fittings or furnishings. YOUR HOME IS AT RISK IF YOU DO NOT KEEP UP REPAYMENTS ON A MORTGAGE OR OTHER LOAN SECURED ON IT. 'A Life Assurance policy may be requested.' 'Written Quotations of credit terms available on request.'

Banner Cross  
 T: 0114 268 3241  
 E: [bannercross@saxtonmee.co.uk](mailto:bannercross@saxtonmee.co.uk)  
 www.saxtonmee.co.uk

Hathersage  
 T: 01433 650009  
 E: [hathersage@saxtonmee.co.uk](mailto:hathersage@saxtonmee.co.uk)

Bakewell  
 T: 01629 815307  
 E: [bakewell@saxtonmee.co.uk](mailto:bakewell@saxtonmee.co.uk)

Matlock  
 T: 01629 828250  
 E: [matlock@saxtonmee.co.uk](mailto:matlock@saxtonmee.co.uk)

